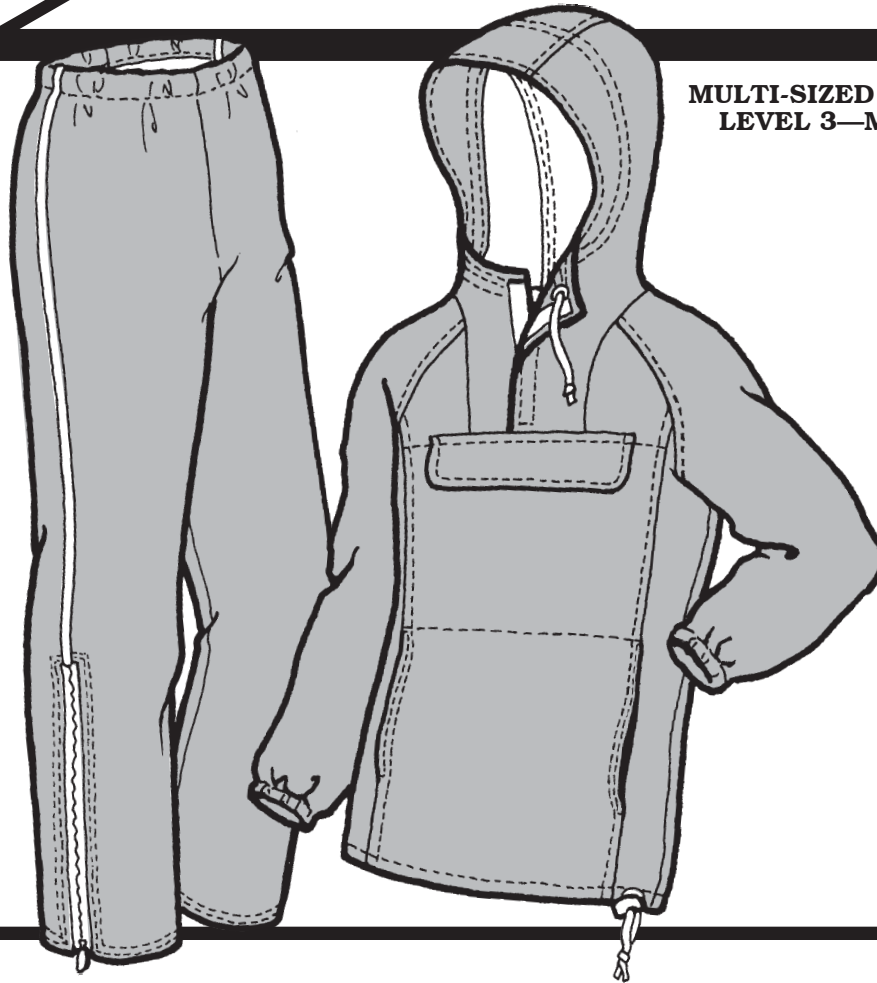


**WOMEN'S
RAINIER WIND & RAIN SUIT**



**MULTI-SIZED PATTERN
LEVEL 3—MEDIUM**

MEASUREMENTS:

IMPORTANT: When selecting pattern size, take measurements over clothing that will be worn under finished garment.

| SIZE | 6 | 8 | 10 | 12 | 14 | 16 | 18 |
|---------------------|----------------------------------|----------------------------------|----------------------------------|----------------------------------|----------------------------------|----------------------------------|-----|
| Bust | 30 ¹ / ₂ " | 31 ¹ / ₂ " | 32 ¹ / ₂ " | 34" | 36" | 38" | 40" |
| Waist | 23" | 24" | 25" | 26 ¹ / ₂ " | 28" | 30" | 32" |
| Hip | 31" | 33 ¹ / ₂ " | 34 ¹ / ₂ " | 36" | 38" | 40" | 42" |
| Back Waist Length | 15 ¹ / ₂ " | 15 ³ / ₄ " | 16" | 16 ¹ / ₄ " | 16 ¹ / ₂ " | 16 ³ / ₄ " | 17" |
| Inseam Length | 30" | 30" | 30" | 30" | 30" | 30" | 30" |

FABRIC:

| | 6-14 | 16-18 |
|-----------------------------------|--|--|
| JACKET: Fabric 60" | 2 ³ / ₈ yd (2.2 m) | 2 ¹ / ₂ yd (2.3 m) |
|45" | 3 ¹ / ₄ yd (3.0 m) | 3 ³ / ₈ yd (3.1 m) |
| Interfacing | 1/8 yd (.12 m) | 1/8 yd (.12 m) |
| PANTS: Fabric60" | 1 ³ / ₈ yd (1.3 m) | 2 ¹ / ₄ yd (2.1 m) |
|45" | 2 ¹ / ₂ yd (2.3 m) | 2 ⁵ / ₈ yd (2.4 m) |
| FULL SUIT: Fabric60" | 3 ³ / ₄ yd (3.5 m) | 3 ⁷ / ₈ yd (3.6 m) |
|45" | 4 ⁷ / ₈ yd (4.5 m) | 5 ¹ / ₈ yd (4.7 m) |

NOTIONS:

1 All-Polyester Thread

JACKET:

1 9" Non-Separating Zipper
 1 pkg 1/4" Grommets
 3 yd (2.7 m) 1/8" Cord
 1 Cord Toggle Lock
 5/8 yd (.57 m) 3/8" Elastic
 1/3 yd (.3 m) 3/4" Velcro

PANTS:

2 15" Non-Separating Zippers
 1 yd (.92 m) 1" Elastic
 2 yd (1.8 m) 1/16" Cord for Piping (optional)
 1/8 yd (.12 m) Fabric for Piping (optional)

SUGGESTED FABRICS:

Tightly-woven Lightweight Waterproof, Waterproof Breathable, or Water-Repellent Fabric.